

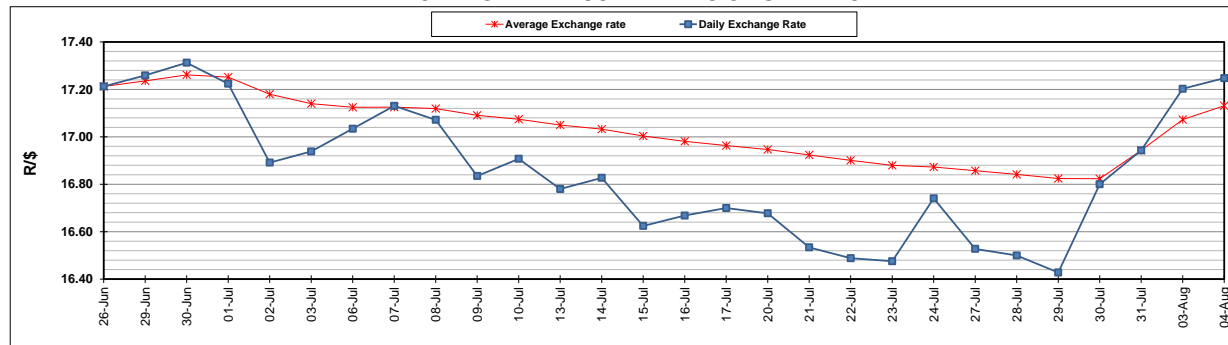
	PETROL 95 ULP	PETROL 93 ULP & LRP	DIESEL 0.05%	DIESEL 0.005%	ILL. PAR.
GAUTENG PUMP PRICE (SA c/l) AS FROM 05/08/2020	1,517.000	1,488.000	-	-	-
WHOLESALE PRICE (SA c/l) AS FROM 05/08/2020	-	-	1,348.560	1,352.960	742.828
SINGLE NATIONAL MAXIMUM RETAIL PRICE	-	-	-	-	934.000
BASIC FUEL PRICE - 04/08/2020 (SA c/l)	534.420	525.503	567.046	571.703	506.181
PRESS RELEASE CONTRIBUTION TO BFP 31/07/2020 - 04/08/2020 (SA c/l)	564.770	545.770	552.630	557.030	499.128
UNIT OVER/(UNDER) RECOVERY - 04/08/2020 (SA c/l)	30.350	20.267	(14.416)	(14.673)	(7.053)
AVERAGE BASIC FUEL PRICE 31/07/2020 - 04/08/2020	528.730	520.131	570.510	574.528	507.589
AVERAGE UNIT OVER/(UNDER) RECOVERY 31/07/2020 - 04/08/2020	36.040	25.639	(17.880)	(17.498)	(8.461)

ANALYSIS MOVEMENT OF AVERAGE OVER/(UNDER) RECOVERY

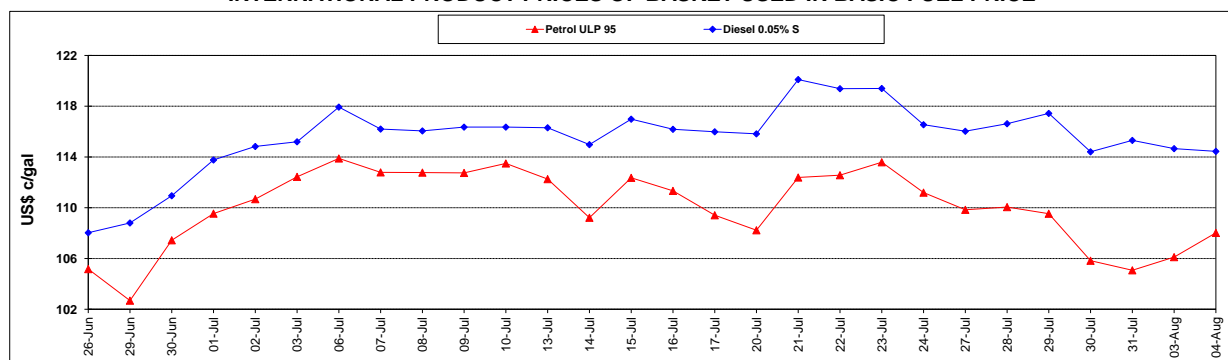
	PETROL 95	PETROL 93	DIESEL 0.05%	DIESEL 0.005%	ILL. PAR.
- MOVEMENT IN INTERNATIONAL PRODUCT PRICES	45.534	34.978	(7.636)	(7.182)	0.653
- MOVEMENT IN EXCHANGE RATE	(9.494)	(9.339)	(10.244)	(10.316)	(9.114)
AVERAGE UNIT OVER/(UNDER) RECOVERY 31/07/2020 - 04/08/2020	36.040	25.639	(17.880)	(17.498)	(8.461)

R/\$ EXCHANGE RATE - (R/\$17.2475 - 04/08/2020)

EXCHANGE RATE USED IN BASIC FUEL PRICE



INTERNATIONAL PRODUCT PRICES OF BASKET USED IN BASIC FUEL PRICE



BASIC FUEL PRICE IN SA CENTS PER LITRE

